

Cazaux

PUMPS MANUFACTURER SINCE 1954

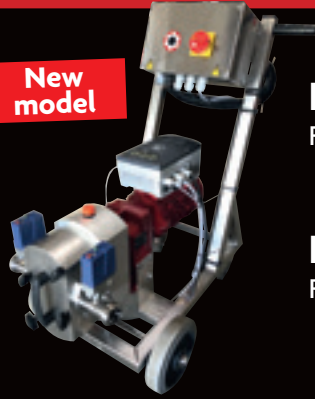


www.cazaux-pumps.com



Our New Products

New model



LOB® 100

Page 12

Doublexc® 300H

Page 14



Cazaux cabinet & remote control

Page 25



Quick valve kit

Page 25



Pumping over centrifugal pumps

Page 26



Mechanical gun for automatic filling

Page 26



Feeding hopper for lobular pumps

Page 26



Lobular pumps ATEX

Page 26



OENOFLEX® PUMPING OVER PUMPS

The range of pumping over pumps we offer comes from the **OENOFLEX®** series. The volume of the pump body and its Ø50 fittings facilitate the passage of the must. The reduced rotation speed helps protect the product while conveying the pulp and seeds in suspension. Its quiet operation respects the serenity of your vat rooms.

OENOFLEX® pumps are gentle with the product, robust in their construction and the professional wine equipment by definition.

We can design all the electrical controls you need according to your specifications: mechanical and electronic timer, temperature sensor, product detection etc.

	L120	L160NR	L200
Flow range	53 Gal US/mn 120 hL/h	70 Gal US/mn 160 hL/h	88 Gal US/mn 200 hL/h
Rpm	360	480	550
kW	1,1	1,5	2,2
Trifase tension	220/400V	220/400V	220/400V
Amperage	2,7	3,7	4,5
Weight	25	27	30

In-line fittings. For any other option: contact us.



Must pump cabinet

Control box that includes: isolating switch, circuit breakers, and pump temperature protection.



A complete range

Summary



Cenoflex® Low speed pumps 100 SERIES pages 4-5



Rotorexc® Eccentric screw pumps pages 18-19



Cenoflex® Low speed pumps 200 SERIES pages 6-7



Rotorflex® High speed pumps pages 20-21



Cenoflex® Low speed pumps 300 SERIES pages 8-9



Rotorflex® Accessories pages 22-23



Cenoflex® Low speed pumps 600 SERIES pages 10-11



Cenoflex® and Rotorflex® spare parts page 24



LOB® NDA : Lobular pumps pages 12-13



Options page 25



Doublexc® Rotary eccentric piston pumps pages 14-15



New products: pumps, equipments, automat page 26



Cenocentrif® Centrifugal pumps pages 16-17



Cenodeb Volumetric flow meters page 27

Serial characteristics: 380V, frequency: 50Hrz, 10 meters (please ask for special tension and frequency)

GENERAL TERMS OF SALE

RESERVATION OF TITLE: We shall retain title to the item delivered until the full amount due from the purchaser has been received. Until we have been paid, we shall have the right to prohibit the use of the item delivered or to regain possession of it. The purchaser is authorized to resell the goods. However, he must then pass on to us all credit in his favour arising from the resale to third parties.

DELIVERY: Our goods are always shipped at the risk of the recipient, who is responsible for making any necessary claims against the carrier concerned. The recipient must check the number of packages received and the state of the goods in the presence of the carrier. Any complaints must be detailed on the delivery document and confirmed by registered letter sent to the carrier within 48 hours. If any reservations regarding the delivery are not completely and correctly expressed, the total value of the goods delivered will be fully due. In any case, disputes regarding transport cannot lead to all or part of the payment of the relative invoice being withheld.

RETURNS: Any return of goods must be upon our express authorization. A discount of 20% will be applied after we have carried out an assessment of the new items returned.

GUARANTEE: We guarantee the items delivered against any defects in the materials and manufacturing faults for a period of one year under normal conditions of use and with correct assembly. Items which are found to be defective will be replaced free of charge, with the exception of parts which have simply undergone normal operational wear. It is the customer's responsibility to prove, upon our request, that the product has not been misused, overloaded, incorrectly assembled or subject to improper use. We shall not be liable for compensation for any reason whatsoever.

JURISDICTION: The Court of Bordeaux (France) shall have sole jurisdiction in any disputes that may arise.

100 SERIES Low speed pumps

Characteristics

- Pump with flexible neoprene impeller
- Low rotational speed
- Pump housing in 316L stainless steel, precision foundry
- Pump on stainless steel trolley
- Gear reducer with two speeds motor
- Mechanical seal
- Neoprene/EPDM impeller

Electrical equipment

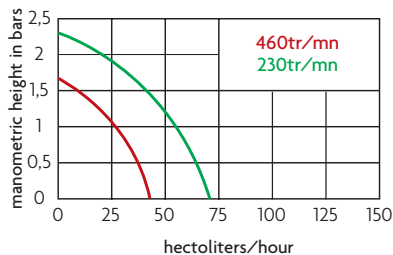
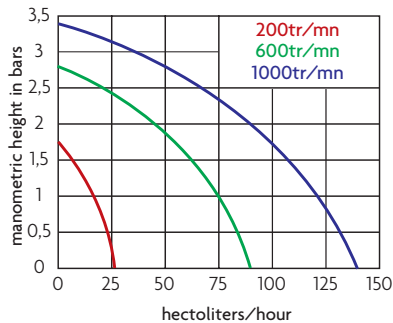
- Direction reversal switch
- Circuit breaker
- 10 meters cable with plug
- Plug PCE or HYPRA in accordance with the CE standard

Outlet types



SL Ø 40

Curves and overall dimensions



These tests were carried out with a 3 meters pipe for suction and discharge, with water at 10°C.

Pressure losses are due to:

- the length of piping used.
- the density and temperature of the product conveyed.
- the sturdiness and nature of the impeller.

Options

- Speed regulator
- Radio control
- In-line fittings
- DIN thread
- Pressure regulator
- Pressure switch
- Bypass valve
- 4 wheels trolley

Use

- Pumping over
- Descaling
- Filtration
- Bottling
- Barrel filling



**LCE5/140
BARRELS**

LCE5/140

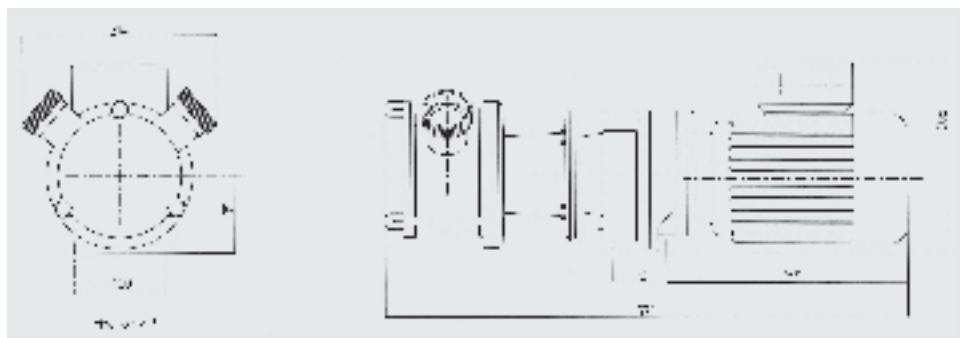
**FABRICATION
FRANÇAISE**

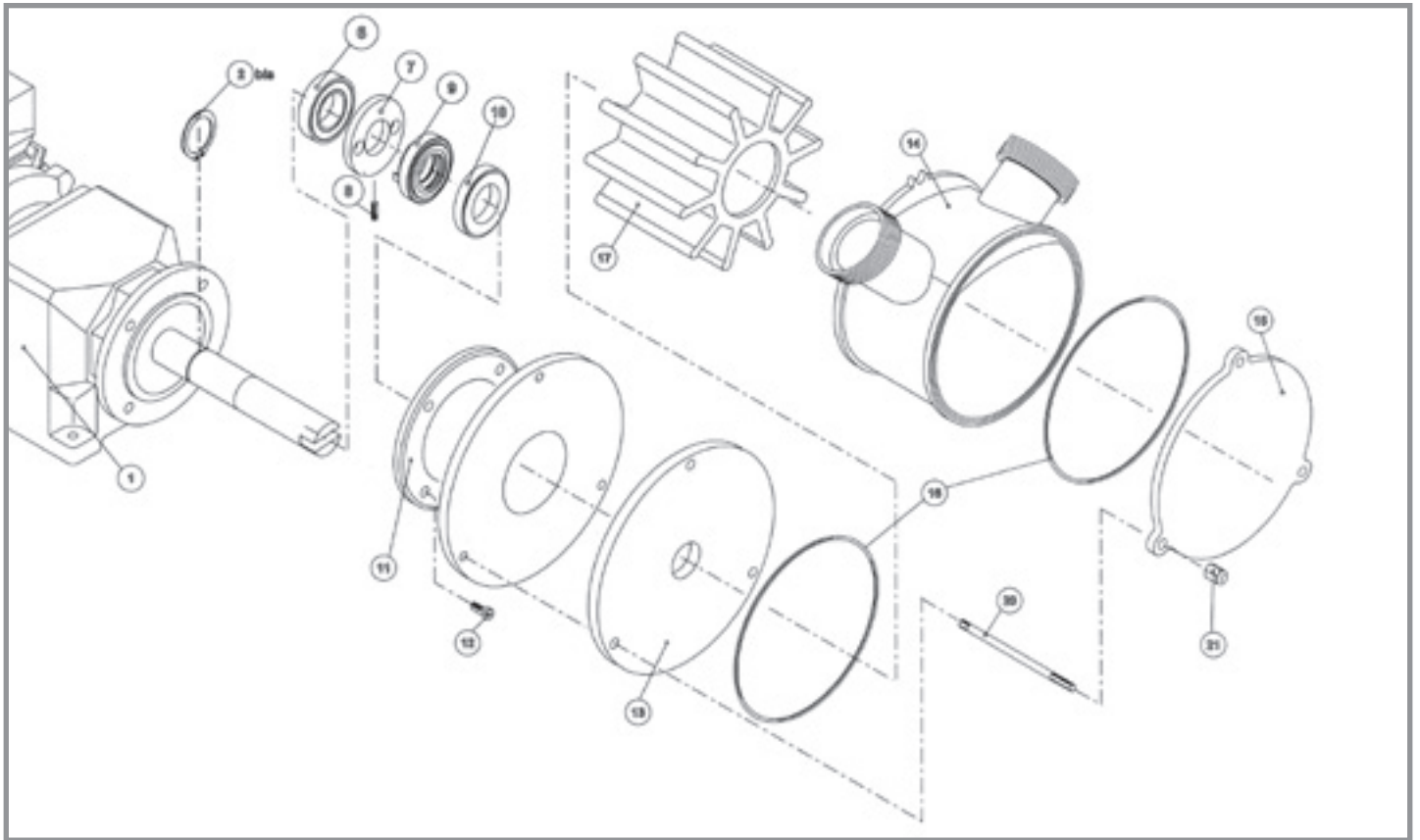


LCM16/85



LCE10/100M





on trolley with electrical equipment	no trolley, no electrical equipment	no trolley with electrical equipment	GENOFLEX 100 SERIES STAINLESS STEEL Ø 40 macon in-line outlets				
			Reference	Gal US/mn	Flow l/h	kW	Speed rpm

2 speed motors							
●			LC35/70	15 and 32	3500 and 7000	0,7 and 1,1	230 and 460
	●		L35/70				
		●	L35/70AE				
●			LC50/100	22 and 43	5000 and 10000	1,0 and 1,4	330 and 660
	●		L50/100				
		●	L50/100AE				

Mechanical regulators							
●			LCM16/85	7 to 37	1600 to 8500	1,1	230 to 460
	●		LM16/85				
		●	LM16/85AE				
●			LCM25/140	12 to 62	2500 to 14000	1,5	330 to 660
	●		LM25/140				
		●	LM25/140AE				

Electronic regulators							
●			LCE5/140	2 to 62	500 to 14000	1,5	50 to 850
	●		LE5/140				
		●	LE5/140AE				
●			BARRELS				
●	New*		LCE10/100M	2 to 43	500 to 10000	1,5	50 to 850

* Single-phase current 230V

Spare parts		
Ref.	Description	Code
1	Motor reducer	Please ask for a quote
2bis	Circlips	CT30
6	Bearing	CT6306
7	Drive ring	BAGVM.
9	Swivel joint	CE305415P
10	Counter-face	CY305710
11	Spacer ring	FPI014/FC
13	Rear flange	DLI00LAR
14	Pump housing	FN100LSV40
15	Front flange	DLI00LAV
16	O-ring gasket	CTI2025
17	Impeller	MBL100
20/21	Stainless steel tension rod with nut	TIL100

Kits	
Repair kit	Code
Impeller	MBL100
Sealing (ref. 9, 10, 16)	KITLJ100

Outlet types	
Description	Code
Ø50 MACON in-line outlets	SL50/100
Ø50 DIN In-line outlets	SL50/100DIN

200 SERIES Low speed pumps

Characteristics

- Pump with flexible neoprene impeller
- Low rotational speed
- Pump housing in 316L stainless steel, precision foundry
- Pump on stainless steel trolley
- Gear reducer with two speeds motor
- Mechanical seal
- Neoprene/EPDM impeller

Electrical equipment

- Direction reversal switch
- Circuit breaker
- 10 meters cable with plug
- Plug PCE or HYPRA in accordance with the CE standard

Options

- Speed regulator
- Radio control
- In-line fittings
- DIN thread
- Pressure regulator
- Pressure switch
- Bypass valve

Use

- Pumping over
- Descaling
- Filtration
- Bottling
- Barrel filling



LC110/220

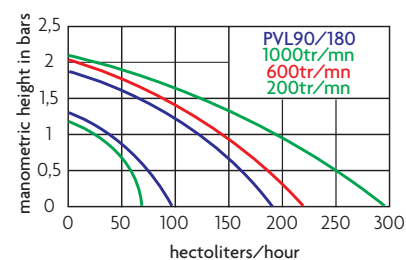
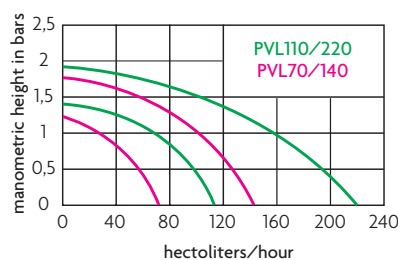


LCE15/240



LCE15/240 PREMIUM

Curves and overall dimensions



Outlet types

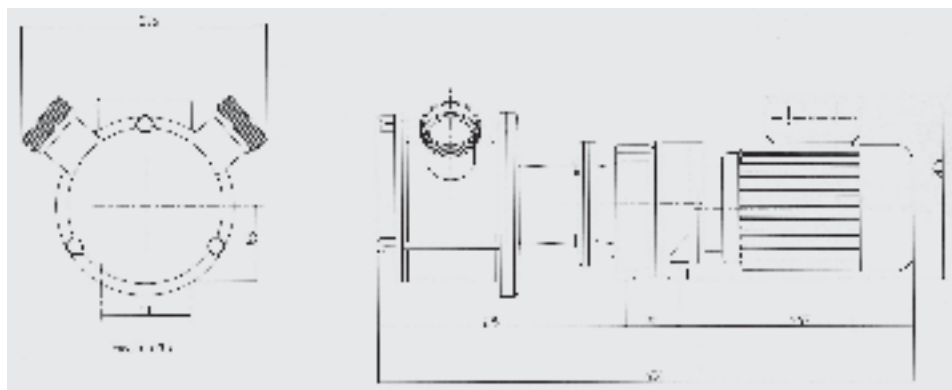


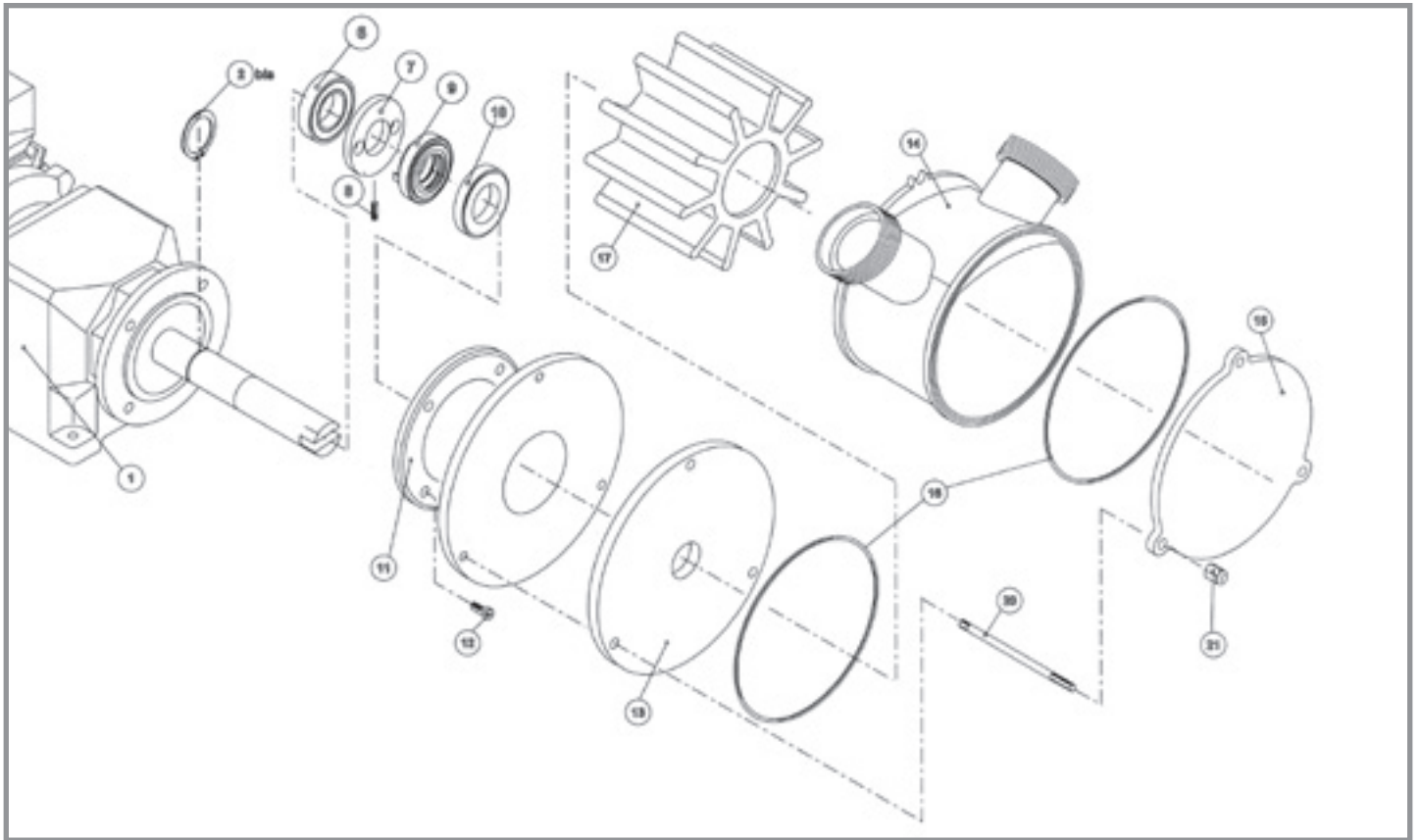
SL Ø 50

These tests were carried out with a 3 meters pipe for suction and discharge, with water at 10°C.

Pressure losses are due to:

- the length of piping used.
- the density and temperature of the product conveyed.
- the sturdiness and nature of the impeller.





GENOFLEX 200 SERIES STAINLESS STEEL Ø 50 macon in-line outlets							
on trolley with electrical equipment	no trolley, no electrical equipment	no trolley with electrical equipment	Reference	Gal US/mn	Flow l/h	kW	Speed rpm

2 speed motors							
●			LC70/140	30 and 62	7000 and 14000	1,0 and 1,4	200 and 400
	●		L70/140				
		●	L70/140AE				
●			LC90/180	40 and 80	9000 and 18000	1,0 and 1,4	250 and 500
	●		L90/180				
		●	L90/180AE				
●			LC110/220	48 and 97	11000 and 22000	1,3 and 1,8	310 and 620
	●		L110/220				
		●	L110/220AE				

1 speed motors Atex							
●			L200 Atex	87	20000	3	400
	●		L200 Atex				
		●	L200 Atex				

Electronic regulators							
●			LCE15/240	7 to 105	1500 to 24000	2,2	50 to 775
	●		LE15/240AE				
		●	LE15/240				
●			LCE15/260	7 to 115	1500 to 26000	3	
	●		LE15/260AE				
		●	LE15/260				

Spare parts		
Ref.	Description	Code
1	Motor reducer	Please ask for a quote
2bis	Circlips	CT30
6	Bearing	CT6306
7	Drive ring	BAGVM.
9	Swivel joint	CE305415P
10	Counter-face	CY305710
11	Spacer ring	FP2002
13	Rear flange	DL200LAR
14	Pump housing	FN200LSV50
15	Front flange	DL200LAV
16	O-ring gasket	CTI5825
17	Impeller	MBL200
18	Impeller for LCE15/260	MBL200C
20/21	Stainless steel tension rod	TIL200

Kits	
Repair kit	Code
Impeller	MBL200
Impeller for LCE15/260	MBL200C
Sealing (ref. 9, 10, 16)	KITLJ200

Outlet types	
Description	Code
Ø40 MACON in-line outlets	SL40/200
Ø50 DIN In-line outlets	SLS0/200DIN

300 SERIES Low speed pumps

Characteristics

- Pump with flexible neoprene impeller
- Low rotational speed
- Pump housing in 316L stainless steel, precision foundry
- Pump on stainless steel trolley
- Gear reducer with two speeds motor
- Mechanical seal
- Neoprene/EPDM impeller

Electrical equipment

- Direction reversal switch
- Circuit breaker
- 10 meters cable with plug
- Plug PCE or HYPRA in accordance with the CE standard

Options

- Speed regulator
- Radio control
- In-line fittings
- DIN thread
- Pressure switch

Use

- Pumping over
- Descaling
- Filtration
- Bottling
- Barrel filling



LCE25/400

FABRICATION FRANÇAISE



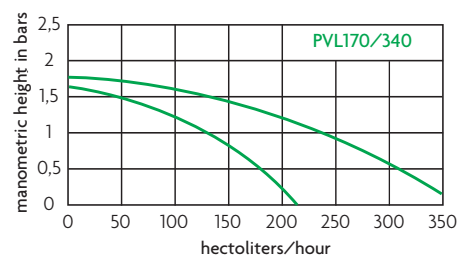
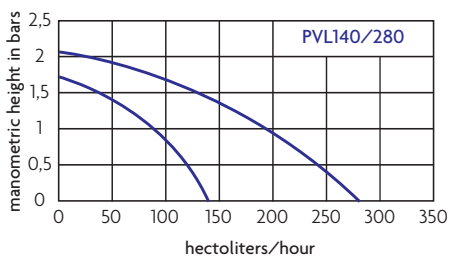
LC170/340

Outlet types



SL Ø 70

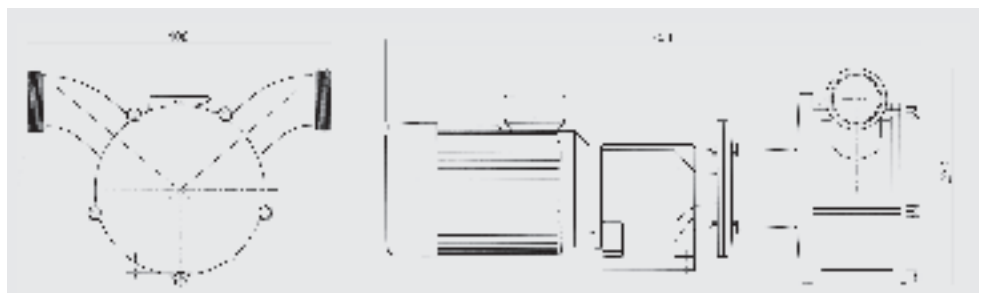
Curves and overall dimensions

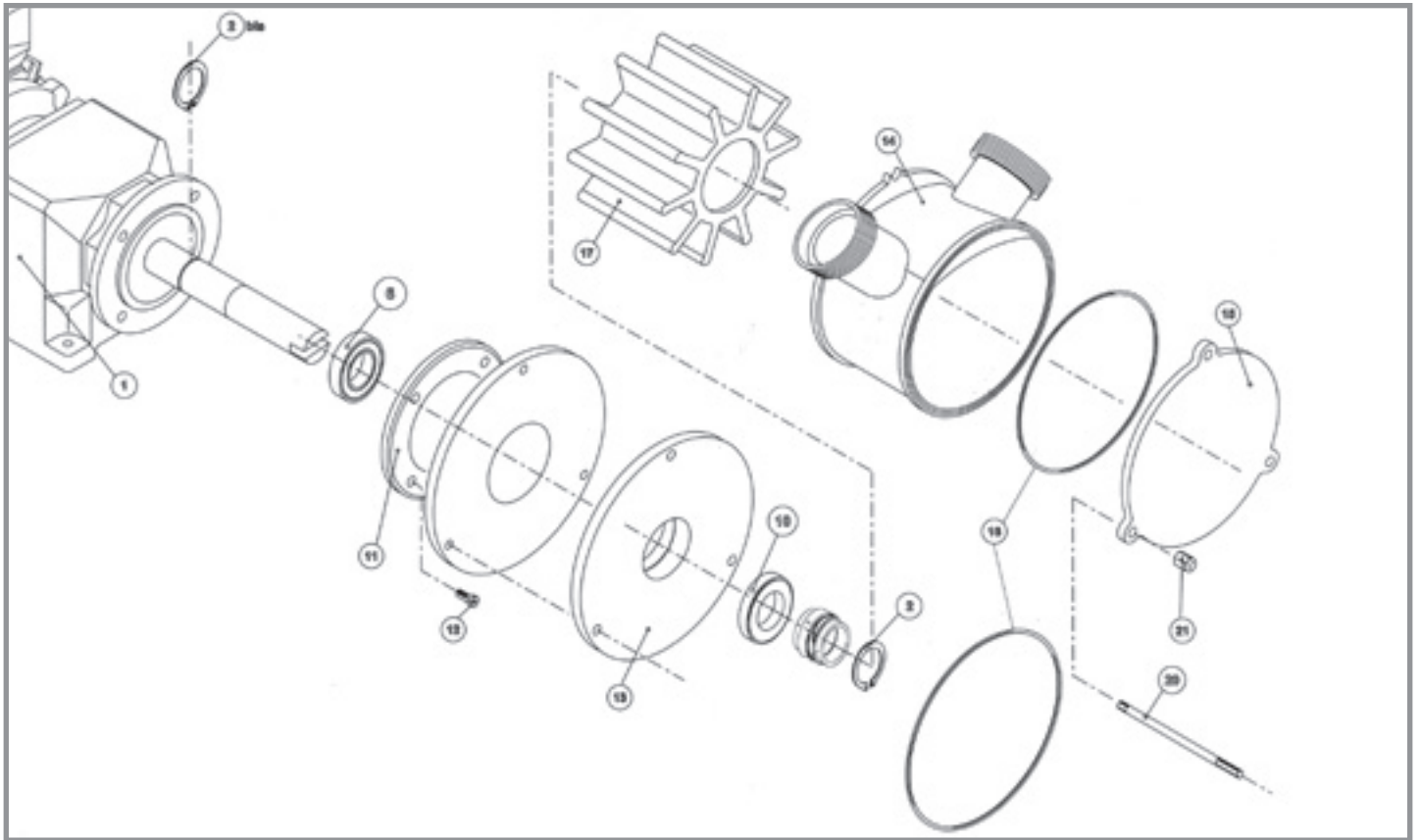


These tests were carried out with a 3 meters pipe for suction and discharge, with water at 10°C.

Pressure losses are due to:

- the length of piping used.
- the density and temperature of the product conveyed.
- the sturdiness and nature of the impeller.





on trolley with electrical equipment		no trolley, no electrical equipment		CENOFLEX 300 SERIES STAINLESS STEEL Ø 70 macon in-line outlets			
Reference	Gal US/mn	Flow l/h	kW	Speed rpm			

2 speed motors							
●			LC140/280	62 and 123	14000 and 28000	1,8 and 2,3	270 and 540
	●		L140/280				
		●	L140/280AE				
●			LC170/340	75 and 148	17000 and 34000	2,4 and 3,1	360 and 720
	●		L170/340				
		●	L170/340AE.O				

1 speed motors Atex							
●			L300 Atex	132	30000	5	400
	●		L300 Atex				
		●	L300 Atex				

Electronic regulators							
●			LCE25/400	10 to 117	2500 to 40000	4	50 to 775
		●	LE25/400AE				
	●		LE25/400				

Spare parts		
Ref.	Description	Code
1	Motor reducer	Please ask for a quote
2	Stainless steel circlips	CT40INOX
2bis	Circlips	CT40
6	Bearing	CT6308
9	Swivel joint	CY406518
10	Counter-face	CY406812
11	Spacer ring	FDP331
13	Rear flange	DL300LAR
14	Pump housing	FN300SV50
15	Front flange	DL300LAV
16	O-ring gasket	CTT923
17	Impeller	MBL300
20/21	Stainless steel tension rod	TIL300

Kits	
Repair kit	Code
Impeller	MBL300
Sealing (ref. 9, 10, 16)	KITLJ300

Outlet types	
Description	Code
Ø50 MACON in-line outlets	SL50/300
Ø50 DIN In-line outlets	SL50/300DIN
Ø65 DIN In-line outlets	SL65/300DIN
Ø65 TRICLAMP In-line outlets	SL65/300TRICLAMP

600 SERIES Low speed pumps

Characteristics

- Pump with flexible neoprene impeller
- Low rotational speed
- Pump housing in 316L stainless steel, precision foundry
- Pump on stainless steel trolley
- Gear reducer with two speeds motor
- Mechanical seal
- Neoprene/EPDM impeller

Electrical equipment

- Stainless steel box
- Fluid detector
- Or temperature control
- 10 meters cable with plug
- Plug PCE or HYPRA in accordance with the CE standard

Outlet types



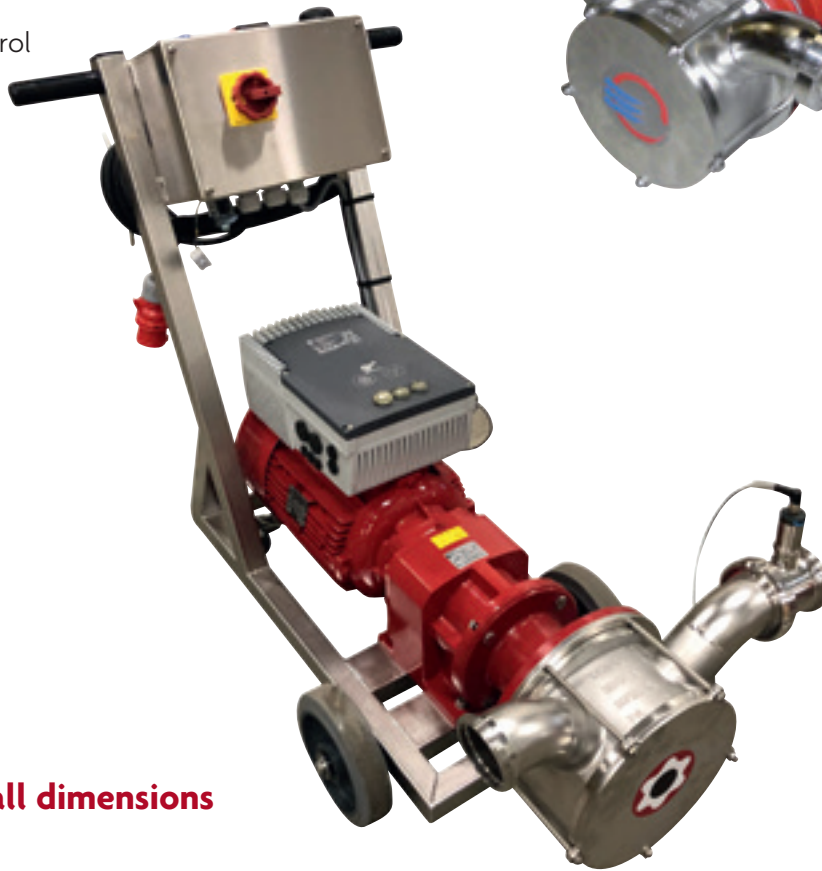
SL Ø 70

Options

- Speed regulator
- Radio control
- DIN thread
- In-line fittings
- 4 wheels trolley

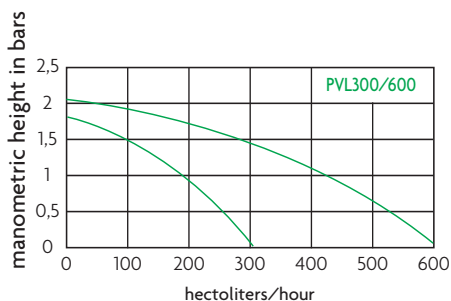
Use

- Tankers
- Descaling
- Delestage
- Bottling



**FABRICATION
FRANÇAISE**

Curves and overall dimensions

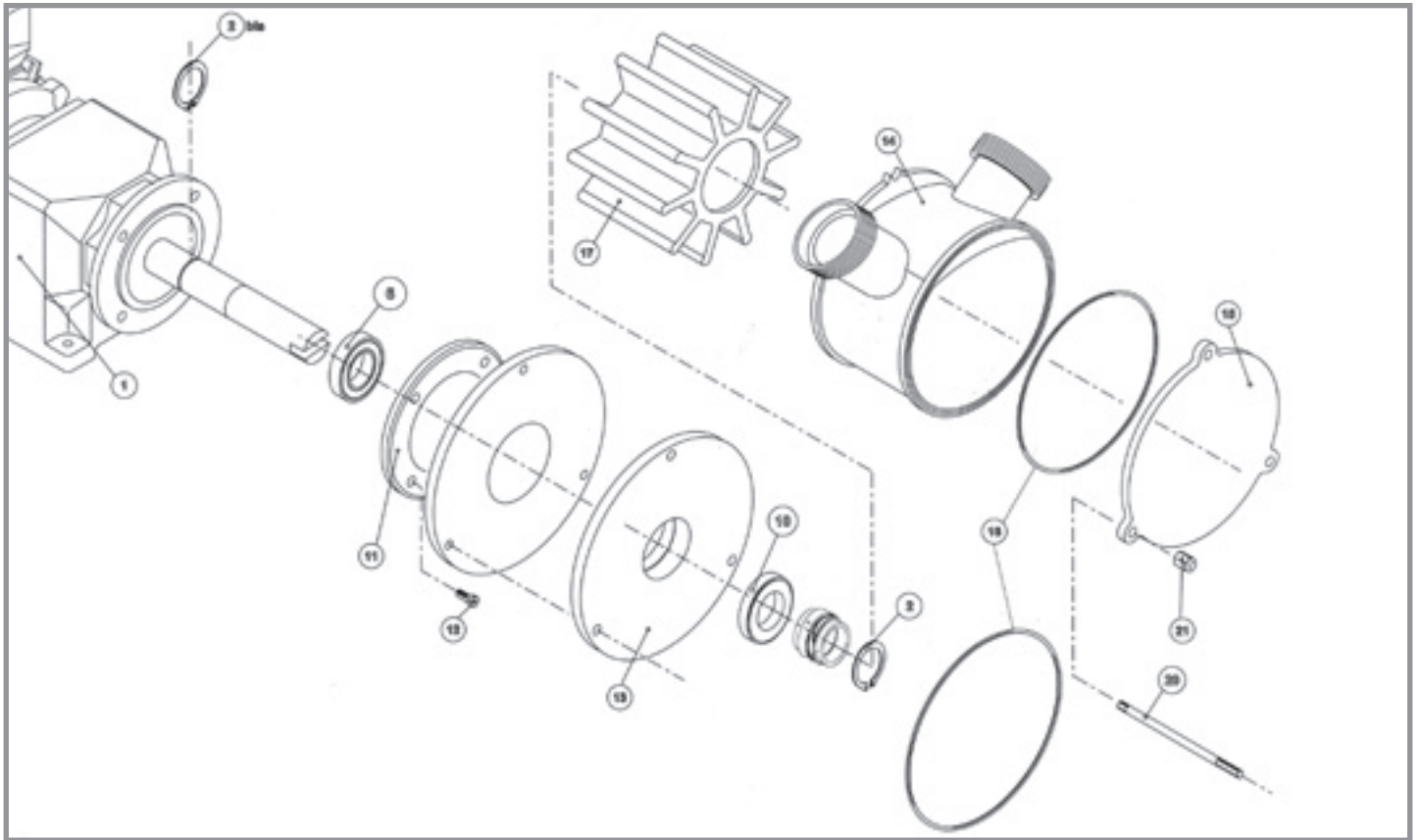


These tests were carried out with a 3 meters pipe for suction and discharge, with water at 10°C.

Pressure losses are due to:

- the length of piping used.
- the density and temperature of the product conveyed.
- the sturdiness and nature of the impeller.





on trolley with electrical equipment		no trolley, no electrical equipment		no trolley, with electrical equipment		CENOFLEX 600 SERIES STAINLESS STEEL Ø 70 macon in-line outlets		
Reference	Gal US/mn	Flow l/h	kW	Speed rpm				

2 speed motors							
●			LC300/600	132 and 237	30000 and 54000	3,6 and 4,4	300 and 600
	●		L300/600				
		●	L300/600AE				

Electronic regulators							
●			LCE50/700	22 to 237	5000 to 54000	5,5	50 to 700
	●		LE50/700				
		●	LE50/700AE				

Spare parts		
Ref.	Description	Code
1	Motor reducer	Please ask for a quote
2	Stainless steel circlips	CT40INOX
2bis	Circlips	CT40
6	Bearing	CT6308
9	Swivel joint	CY406518
10	Counter-face	CY406812
11	Spacer ring	FDP631
13	Rear flange	DL600LAR
14	Pump housing	FN600LSV70
15	Front flange	DL600LAV
16	O-ring gasket	CT2353
17	Impeller	MBL600
20/21	Stainless steel tension rod	TIL600

Kits	
Repair kit	Code
Impeller	MBL600
Sealing (ref. 9, 10, 16)	KITIJ600

Outlet types	
Description	Code
Ø65 DIN In-line outlets	SL65/600DIN

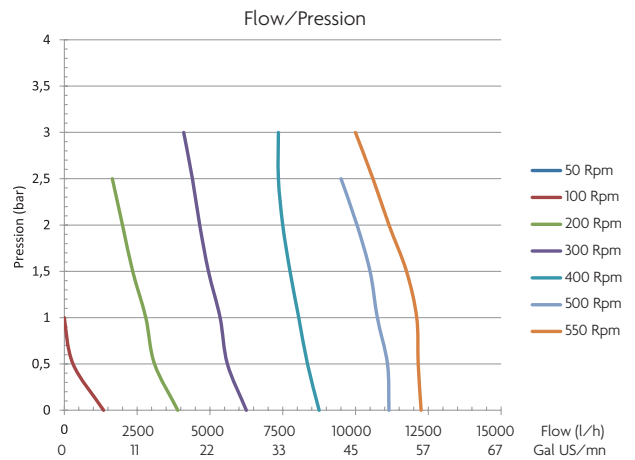
Low speed lobular pumps

Characteristics

- Wide flow range from 8 up to 440 Gal US/mn depending on the model
- Multifunction lobular pump in alimentary nitrile
- Very slow rotation speed (max: 500 rpm): delicate with the product
- Pump housing in 316L stainless steel
- Robust
- Transfer of small solid particles
- Low oxygen dissolution
- Self aspiration: 8 meters
- Electronic regulator
- Very silent
- High pressure (up to 10 bar according to the model) and temperature resistant (-10°C, 90°C)
- Hygienic : easy cleaning

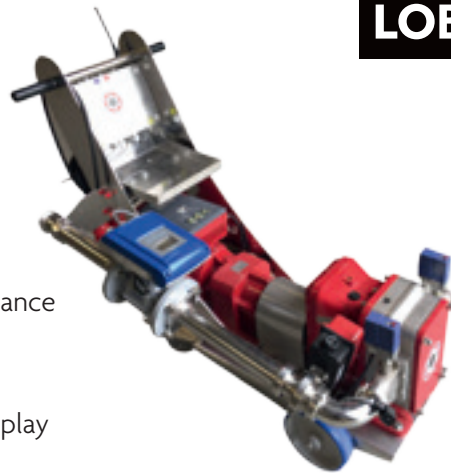


LOB 100E (60kg) DIMENSIONS : 114 X 32 X 94 CM

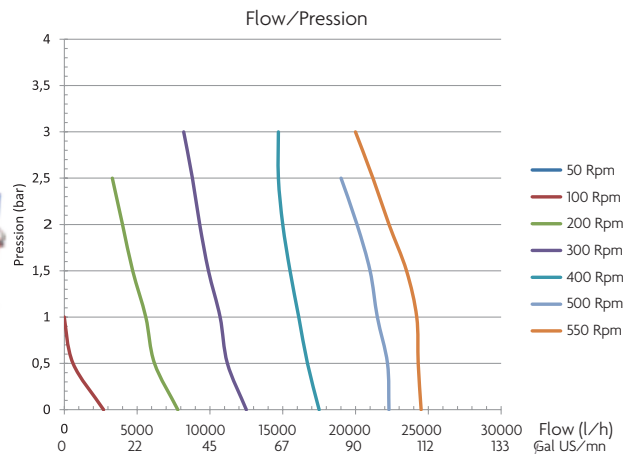


Electrical equipments

- Rotational direction switch
- Circuit breaker
- 10 meters cable
- Plug PCE or HYPRA in accordance with the CE standard



LOB 200E (180kg) DIMENSIONS : 124 X 56 X 100 CM



Options

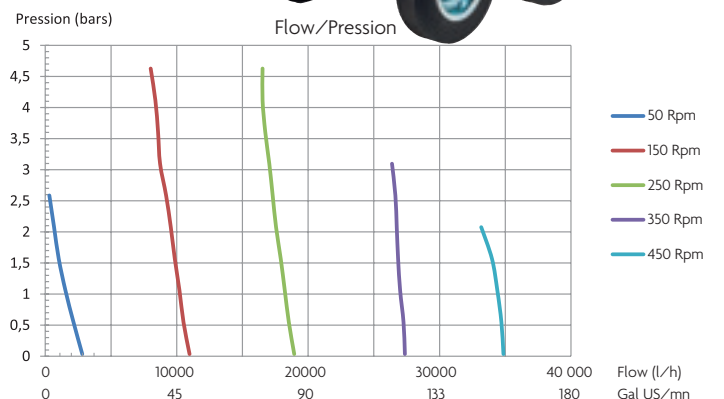
- Remote control with flow display
- Pressure regulator
- Pressure switch for barrel filling
- Security against dry running
- Integrated electromagnetic flowmeter
- Tactil display
- Motorized or pneumatic valve
- **Atex (contact us)**



Use

- **All transfers: from the reception of destemmed grapes to wine bottling**

LOB 300E (205kg) DIMENSIONS : 148 X 61 X 100 CM



LOB® NDA PREMIUM

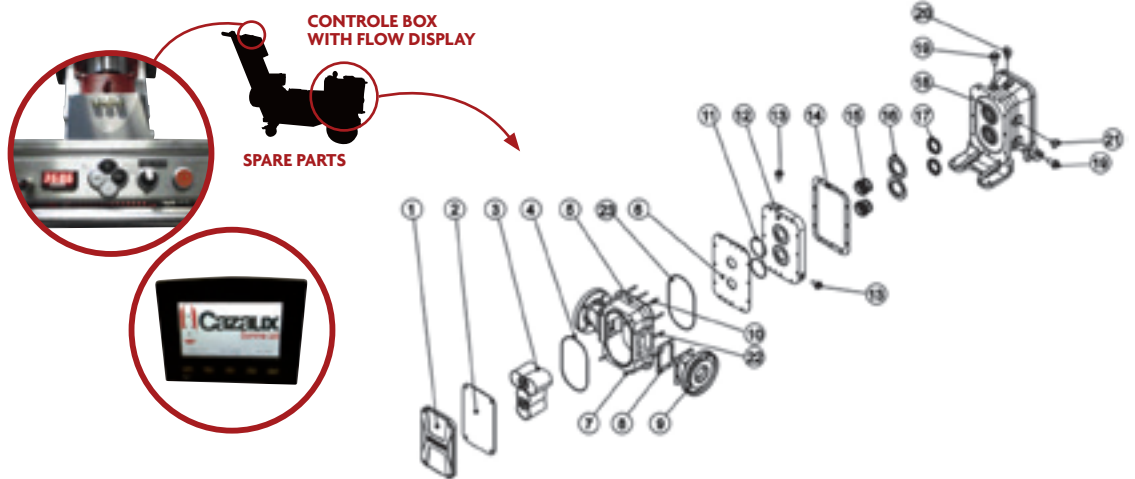
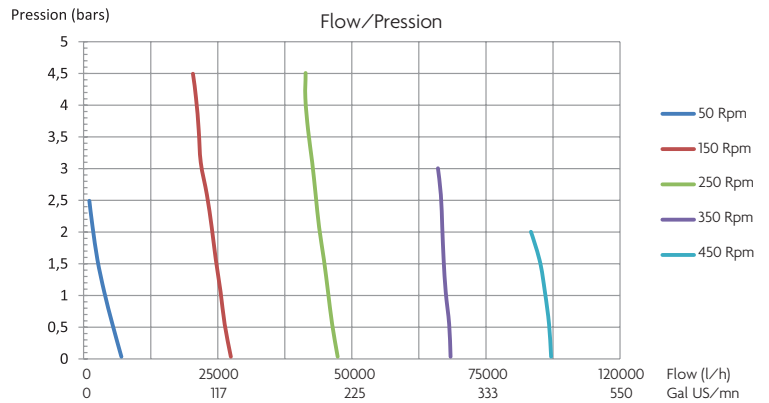
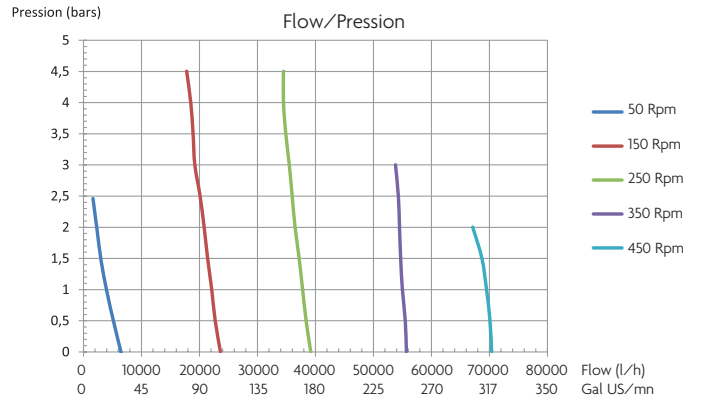
on trolley with electric equipment, remote control, VFD, pressure sensor and quick valve

Reference	Flow L/h	kW	Speed rpm
LOB100 PREMIUM*	1000 to 14000	2,2	50 to 500
LOB200 PREMIUM	2000 to 24000	4	50 to 500
LOB300 PREMIUM	3000 to 33000	5,5	50 to 500
LOB600 PREMIUM	6000 to 64000	7,5	50 to 450
LOB611 PREMIUM	6000 to 64000	11	50 to 450
LOB1000 PREMIUM	8000 to 110000	11	50 to 450
LOB1015 PREMIUM	8000 to 110000	15	50 to 450

Feeding hoopers

Reference	Flow L/h	kW	Speed rpm
TREMIE LOB200/300	7000/10000	1,5	50 to 450
TREMIE LOB600/1000	25000/35000	1,5	50 to 450

* No quick valve on the LOB100PREMIUM



LOB200E / LOB300E / LOB600E / LOB1000E SPARE PARTS

REP	SPECIFICATION	REP	SPECIFICATION	REP	SPECIFICATION
1	Front cover	9	Outlet connection	17	Lip seal
2	Front wear cover	10	Short rear rod	18	Gear box
3	Lobe	11	Internal chamber O-ring gasket	19	Cap reducer
4	O-ring front pump casing	12	Rear cover	20	Eye bolt
5	Pump housing	13	Internal chamber cap	21	Oil level
6	Rear wear cover	14	Adjustment gasket	22	Stud rear pump casing
7	Front rod	15	Mechanical seal	23	O-ring rear pump casing
8	Connection gasket	16	Counter-face		

Rotary Eccentric piston pump

Characteristics

- Low rotational speed: no destruction of pulp and seeds
- Pump housing in stainless steel 316L
- Low oxygen dissolution
- High aspiration capacity up to 8 meters on dry working
- Electronic regulator
- Maintenance: quick disassembled
- Capacity to pump viscous products
- Transfer on long distance and pressure must during pumping over
- Ability to empty pipes after transfer
- Easy cleaning

Use

- Pumping-over, transfer, filtration, Bottling (transfer of lees, juices, wines)

Options

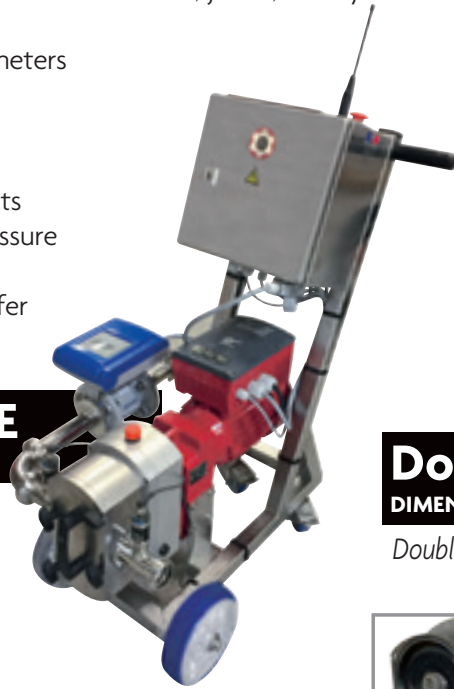
- Remote control
- Pressure regulator
- Pressure switch for barrel filling and security
- Security against dry running for regulator pump
- By-pass
- With display
- Integrated electromagnetic flowmeter

Electrical equipments

- Direction reversal switch
- Circuit breaker
- 10 meters cable
- Plug PCE or HYPRA in accordance with the CE standard

Doublexc® 300H/E

DIMENSIONS: 160 X 60 X 100 CM - 180 KG



Doublexc® 100H/E

DIMENSIONS: 110 X 45 X 80 CM - 70 KG

Double rotary eccentric piston (superimposed)



Doublexc® 300/E

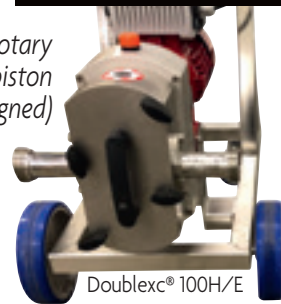
DIMENSIONS: 140 X 60 X 95 CM - 120 KG

Double rotary eccentric piston (aligned)

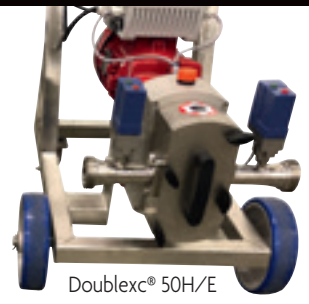
Doublexc® 50H/E

DIMENSIONS: 110 X 45 X 80 CM / 53 KG

Double rotary eccentric piston (aligned)

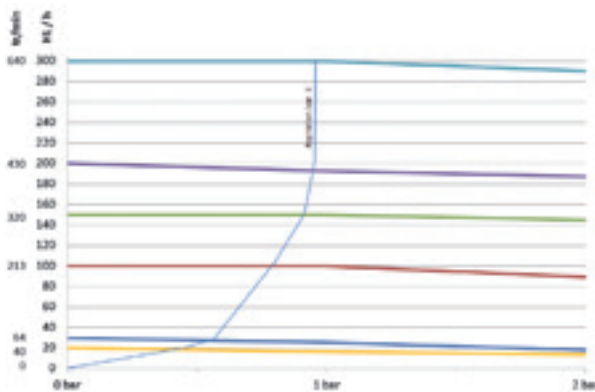


Doublexc® 100H/E

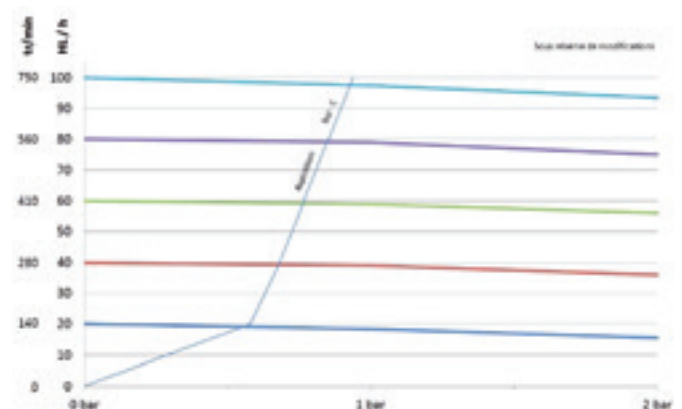


Doublexc® 50H/E

Curves Doublexc® 300/E



Curves Doublexc® 100H/E and 100/E

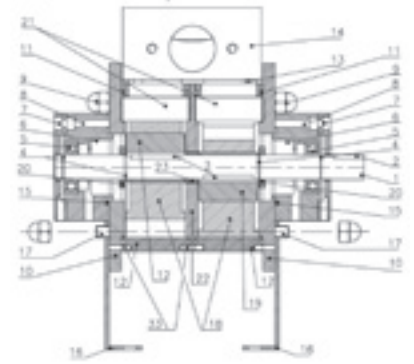
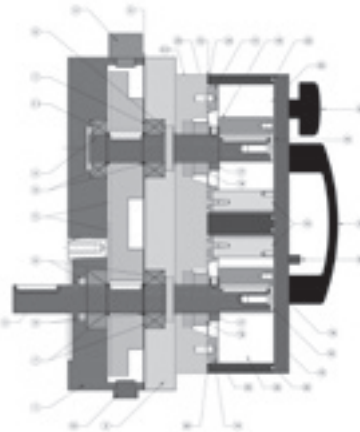
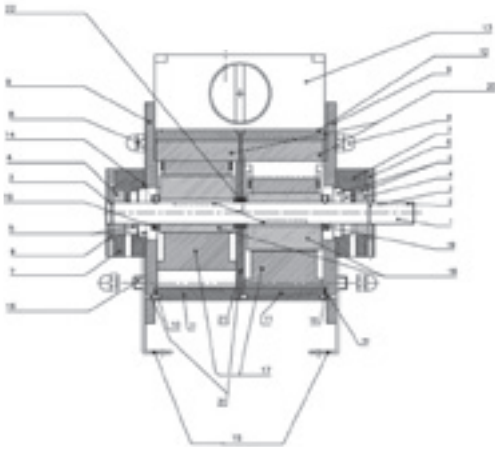


These tests were carried out with a 12 meters ø70 mm pipe for suction and a 6 meters pipe for discharge. Pressure losses are due to:

- The length of piping used
- The density and temperature of the product conveyed.

DOUBLEXC PREMIUM			
on trolley with electric equipment, remote control, VFD, pressure sensor and security against dry running sensor			
Reference	Flow L/h	kW	Speed rpm

Double rotary eccentric piston (superimposed)			
DOUBLEXC50H/E PREMIUM	250 to 5500	1,5	50 to 750
DOUBLEXC 100H/E PREMIUM	500 to 10000	1,5	50 to 750
DOUBLEXC 300E PREMIUM	3000 to 30000	4	50 to 750
DOUBLEXC 300H/E PREMIUM	3000 to 30000	4	50 to 750


SPARE PARTS FOR DOUBLEXC 300/E

NB	DESCRIPTION	CODE
1	axel	21701-70
3	key	20042-02
2	circlips din 471	21701-71
2	bearing	20038-02
2	mechanical seal	20043-61
2	bearing cover	21701-60
2	bearing	21701-50
8	blind nut	21703-10
2	lange	21701-30
4	O-ring gasket for pump casing	21701-19
2	pump casing	21701-10
1	collector joint	21701-09
1	collector	21701-00
2	O-ring gasket for bearing	21701-59
2	base	SELON MOTEUR
4	rod	21701-90
2	diaphragm	20055-07
2	eccentric	20035-01
2	ring	21701-80
2	pallet	21701-20
1	internal cover	21701-40
1	spacer ring	21702-00
1	by pass joint	21702-32
1	by-pass pump casing	21702-30
1	by-pass needle valve	21702-33
1	by-pass spring	20011-02
1	by-pass head	10060-02
1	by-pass screw	10031-14
1	by-pass wheel	10038-02
1	O-ring joint for by-pass	10058-07
1	O-ring joint wheel for by-pass	10054-07
3	pin	-

SPARE PARTS FOR DOUBLEXC 100H/E

NB	DESCRIPTION	CODE
2	guide	11800-18
2	membrane a	10070-07
2	ext. Joint wear cover	11800-16.6
2	int. Joint wear cover	11800-16.5
2	cylinder seal	11701-30
1	lid handle	11800-11.5/15
4	lid wheel	11800-21
2	eccentric washer	11800-20.5
2	mechanical seal	20043-61
2	stop ring	21701-80
2	eccentric	11800-20
2	pallet	11800-17
2	wear cover	11800-16
1	cylindric lid	11800-11
1	lid security	11800-22
1	cylindric base	11800-10.4
1	cylindrer block	11800-10.3
1	level indicator	11800-25.2
1	Exhaust cap	11800-25
1	closing cap	11800-25.4
4	shaft ring	21701-71
3	shaft joint	11800-23
1	bearing	20038-03
3	bearing	39800-35
1	sealing joint	11800-125
2	rack wheel	11800-121
1	high axel	11800-16/15
1	low axel	11800-15/15
1	transmission cap	11800-13/15
1	transmission oilpan	11800-12/15

SPARE PARTS FOR DOUBLEXC 100/E

NB	DESCRIPTION	CODE
1	axel	11701-510.1
1	key	10075-02
2	key	10220-02
4	circlips din 471	11701-17
2	bearing 6004 2rs	10065-03
2	mechanical seal	10055-61
2	lbearing cover	11701-06
2	bearing	11701-05
8	blind nut	11701-46
2	flange	11701-02
4	O-ring gasket for pump casing	11701-30
2	pump casing	11701-01
1	collector joint	11701-15
1	collector	11701-07
2	O-ring gasket for bearing	11701-31
4	rod	11701-11
2	diaphragm	10070-07
2	eccentric	12005-02
2	stop ring	11701-081
2	pallet	11701-12
1	internal cover	11701-03
1	spacer ring	11701-09
1	by pass joint	11700-13

DOUBLEXC OPTIONS

DESCRIPTION	CODE
remote control for electronic variator	COMPELEC32
remote control for electronic variator with display	COMPELEC33
pressure switch in ø 40 din	PRESSOSTAT DN40
pressure switch in ø 50 din	PRESSOSTAT DN50
pressure switch in ø 70 din	PRESSOSTAT DN70

DOUBLEXC OPTIONS

DESCRIPTION	CODE
vibrating reed option against dry running ø 40 din	LAME VIBRANTE DN40
vibrating reed option against dry running ø 50 din	1LAME VIBRANTE DN50
vibrating reed option against dry running ø 70 din	LAME VIBRANTE DN70
touchscreen	ECTDOUB

Self-triggering centrifugal pumps

Specifications

- Single speed pump, 1500 rpm
- Electronic control pump: 500 to 1800 rpm
- Pumps for use in a potentially explosive atmosphere
- Stainless steel 316 L. pump
- Pump on stainless steel trolley

Electrical equipment

- Rotational direction inverter
- Circuit breaker
- 10 meters cable
- Plug PCE or HYPRA in accordance with the CE standard

Options

- Speed control
- Suction / overflow elbow
- T-shaped filter
- Pressure regulator
- DIN threads
- Pressure switch
- Radio control



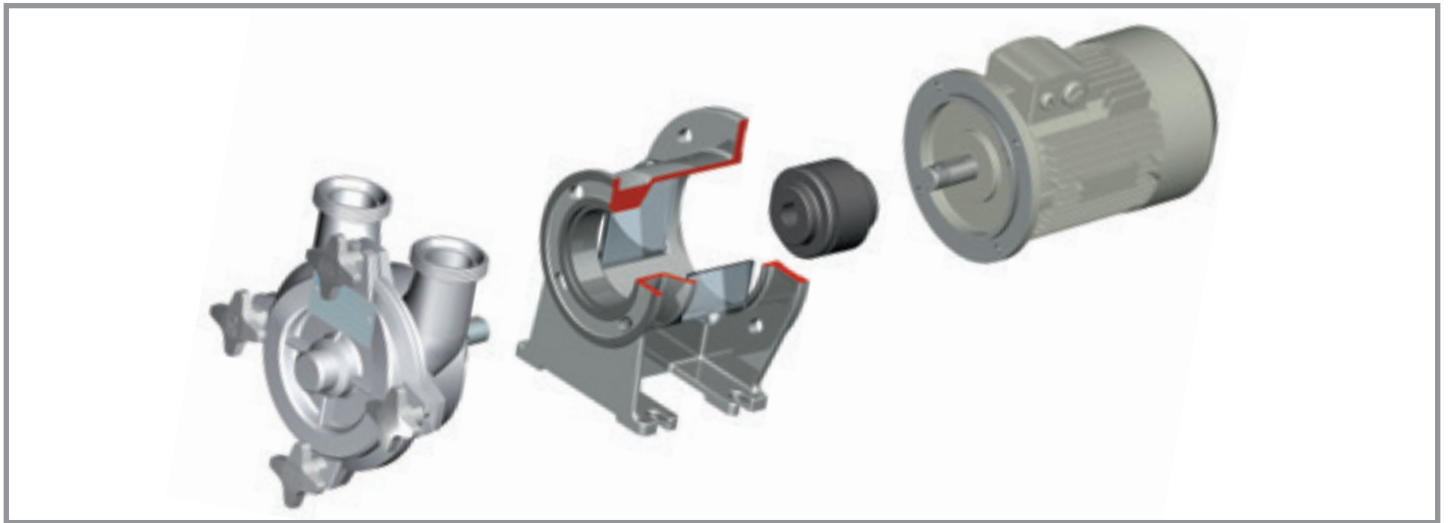
Filter-based protection



Pressure regulator

Possible uses:

Pumps ideally suited to the transport of various fluids such as fruit juice, milk, serum, syrup, oil, wine, spirits, or chemical and pharmaceutical products. They can also be used with foam- and gas-forming products, with partially filled suction tubes. Thanks to the materials and methods used for manufacturing, these pumps can be quickly disassembled, which makes them ideal for the food industry (dairy and beverages). Due to their specific design, these pumps can only empty suction tubes.



TYPE 21				
Reference	kW	Gal US/mn	Speed rpm	DN
Centrifugal single speed pump CA21	0,37	10	25	40
Centrifugal pump with electronic variator	0,55	2 to 12	5 to 27	
Single speed Atex pump	0,55	10	25	
Pressure regulator REG40-A41				
Filter				

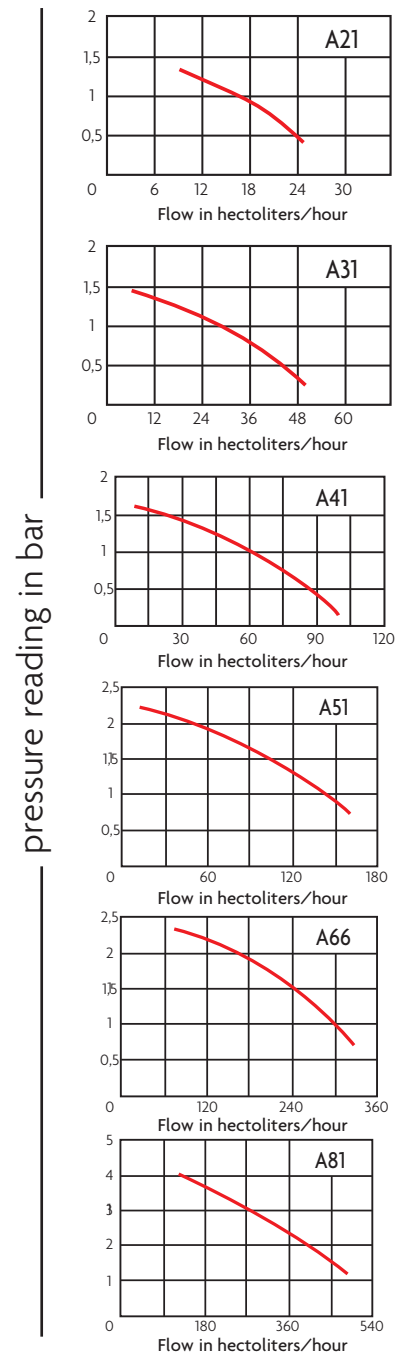
TYPE 31				
Reference	kW	Gal US/mn	Speed rpm	DN
Centrifugal single speed pump CA31	0,55	22	50	40
Centrifugal pump with electronic variator	0,75	3 to 25	10 to 60	
Single speed Atex pump	0,75	22	50	
Pressure regulator				
Filter				

TYPE 41				
Reference	kW	Gal US/mn	Speed rpm	DN
Centrifugal single speed pump CA41	1,1	43	100	40
Centrifugal pump with electronic variator	1,5	8 to 48	20 to 110	
Single speed Atex pump	1,5	43	100	
Pressure regulator				
Filter				

TYPE 51				
Reference	kW	Gal US/mn	Speed rpm	DN
Centrifugal single speed pump CA51	2,2	78	180	50
Centrifugal pump with electronic variator	2,2	17 to 92	40 to 210	
Single speed Atex pump	3	78	180	
Pressure regulator CA51RP				
Filter				

TYPE 66				
Reference	kW	Gal US/mn	Speed rpm	DN
Centrifugal single speed pump CA66	4	132	300	65
Centrifugal pump with electronic variator	4	25 to 158	60 to 360	
Single speed Atex pump	4	132	300	
Pressure regulator REGCA66				
Filter				

TYPE 81				
Reference	kW	Gal US/mn	Speed rpm	DN
Centrifugal single speed pump CA81	9	220	500	80
Centrifugal pump with electronic variator	15			
Single speed Atex pump	11	220	500	
Pressure regulator				
Filter				



Eccentric screw pumps

Characteristics

- Screw pump in stainless steel with round or oval screw
- Carbide-carbide joint
- Perbunan stator
- Operates at high temperatures
- Easy cleaning
- Fast disassembly
- Easy to disconnect
- Heavy-duty universal joints

Electrical equipment

- Direction reversal switch
- Circuit breaker
- 10 meters cable
- Plug

Options

- Different stator type
- Speed regulator
- Radio control
- Thread as requested
- Pressure regulator
- Pressure switch
- Discharge valve

Use

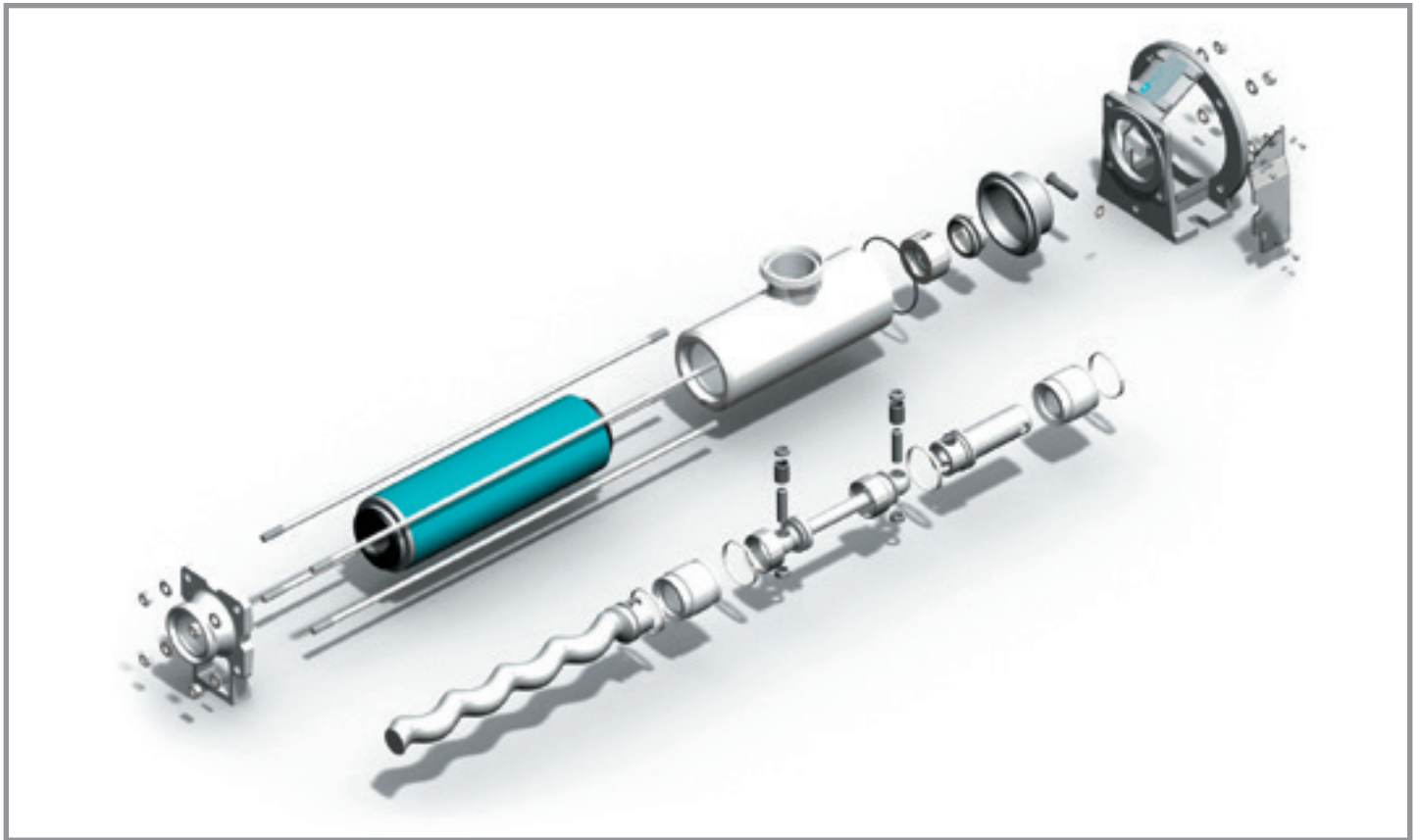
- Filtration
- Bottling
- Pumping thick and viscous products
- Food industry



Probe-based protection



Pressure regulator



ECCENTRIC SCREW PUMP WITH CART-MOUNTED ELECTRONIC CONTROL

Reference	Gal US/mn	Flow L/h	kW	Speed rpm
XCE40	1 to 25	350 to 6000	1,5	60 to 1100
XCE100	2 to 43	500 to 10000	2,2	60 to 900
XCE150	5 to 65	1200 to 15000	3	60 to 825
XCE210	8 to 92	2200 to 21000	5,5	60 to 620
Pressure regulator REG40VIS for models 40 & 100				
Pressure regulator REG50VIS for models 150 & 210				

Spare parts

	Designation	Code
XCE40	Cardan kit	PCCCL0501
	Rotor	TACBB0003
	Rod	TCCBF0010
	Swivel joint	GMXC40/100
	Counter-face	
Stator	SXC40	
XCE100	Cardan kit	PCCCL060L
	Rotor	TACBB0060
	Rod	TCCBF0010M
	Swivel joint	GMXC40/100
	Counter-face	
Stator	SXC100	
XCE150	Cardan kit	PCCCL0651
	Rotor	TACBB1005
	Rod	TCCBB0020
	Swivel joint	GMXC150
	Counter-face	
Stator	SXC150	
XCE210	Cardan kit	Please contact us
	Rotor	Please contact us
	Rod	Please contact us
	Swivel joint	GMXC210
	Counter-face	
Stator	SXC210	

Rotorflex Pumps

Characteristics

- Single or dual speed pump
- Pump with mechanical or electronic regulator
- Pump housing in 316L stainless steel

Electrical equipment

- Direction reversal switch
- Circuit breaker
- 10 meters cable
- Plug

Options

- Speed regulator
- Pressure regulator
- DIN, SMS, gas or French fire service standard thread

Use

- Analysis device
- Brewing
- Pumping over
- Filtration



		ROTORFLEX PUMPS					
on trolley with electrical equipment	no trolley, no electrical equipment	Type	Reference	Gal US/mn	Flow l/h	kW	Speed rpm

20 SERIES STAINLESS STEEL - Ø 15/21 gas

●		1 speed motor	21.3.20	8	2000	0,37	1500
	●	1 speed motor	2.3.20	8	2000	0,37	1500

40 SERIES STAINLESS STEEL - Ø 40 Macon

●		1 speed motor	21.3.40	18	4500	0,75	1500
	●		2.3.40	18	4500	0,75	1500
●		Mechanical regulator *	VMC30	2 to 12	600 to 3000	0,37	140 to 1000
●		Mechanical regulator *	VMC60	5 to 25	1200 to 6000	0,75	380 to 2000

* Plate required for attachment to client installation.

100 SERIES STAINLESS STEEL - Ø 40 Macon

●		1 speed motor	21.3.100	42	9500	1,10	1500
	●		2.3.100	42	9500	1,10	1500
●		2 speed motor	21.2V3.100	18 to 42	4500/9500	0,6/1,0	750/1500
	●		2V3.100	18 to 42	4500/9500	0,6/1,0	750/1500

150 SERIES STAINLESS STEEL - Ø 50 Macon

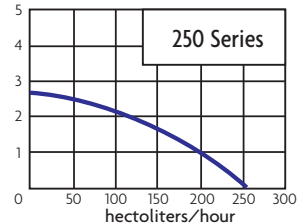
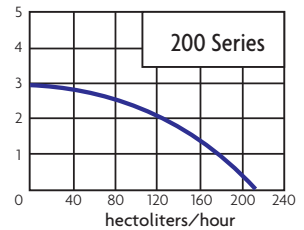
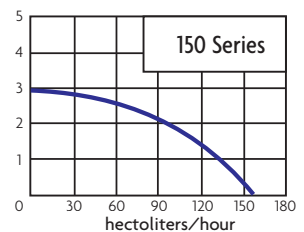
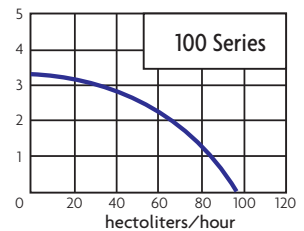
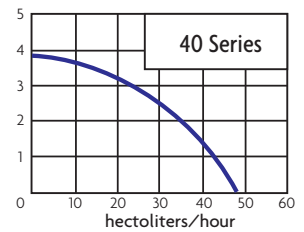
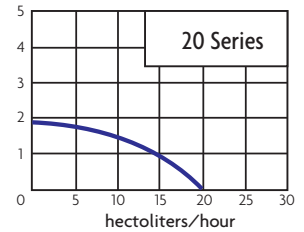
●		1 speed motor	21.3.150	65	15000	2,2	1500
	●		2.3.150	65	15000	2,2	1500

200 SERIES STAINLESS STEEL - Ø 50 Macon

●		1 speed motor	21.3.200	92	21000	2,2	1500
	●		2.3.200	92	21000	2,2	1500

250 SERIES STAINLESS STEEL - Ø 50 Macon

●		1 speed motor	21.3.250	110	25000	3,0	1500
	●		2.3.250	110	25000	3,0	1500



pressure reading in bar

Spare parts for Rotorflex® range

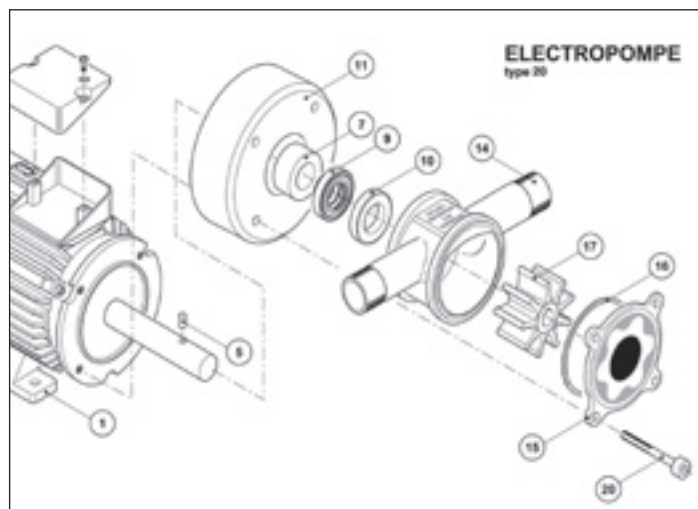
Spare parts

Ref.	Description	Code
1	Motor to be defined according to models	Please contact us
5	Pin	AP4
7	Ring	BA152116
9	Swivel joint	CY153512
10	Counter-face	CY16388
11	Spacer ring	FP232
14	Pump housing	FNR201521
15	Front flange	DL20R
16	O-ring gasket	CT5525
17	Impeller	MB2015
20	Screw 6 × 70 Socket Cap	11332

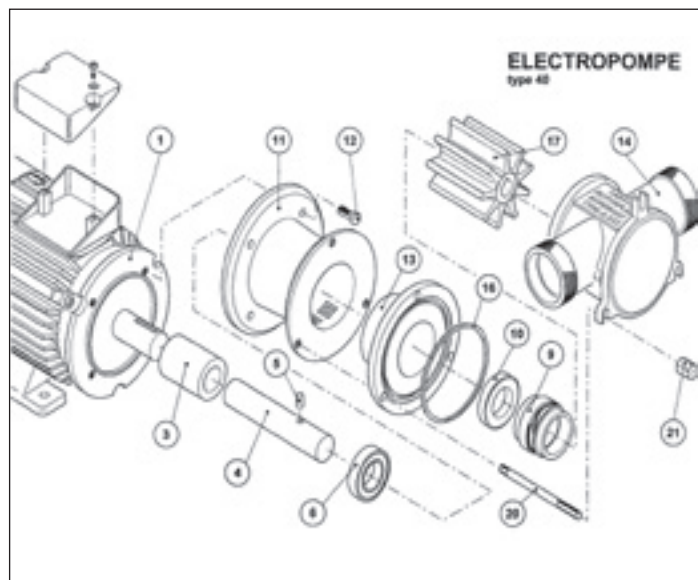
Blister pack kits

Repair kit	Code
Impeller & sealing (ref. 9, 10, 16, 17)	KIT20
Sealing (ref. 9, 10, 16)	KIT20J

ROTORFLEX 20



ROTORFLEX 40



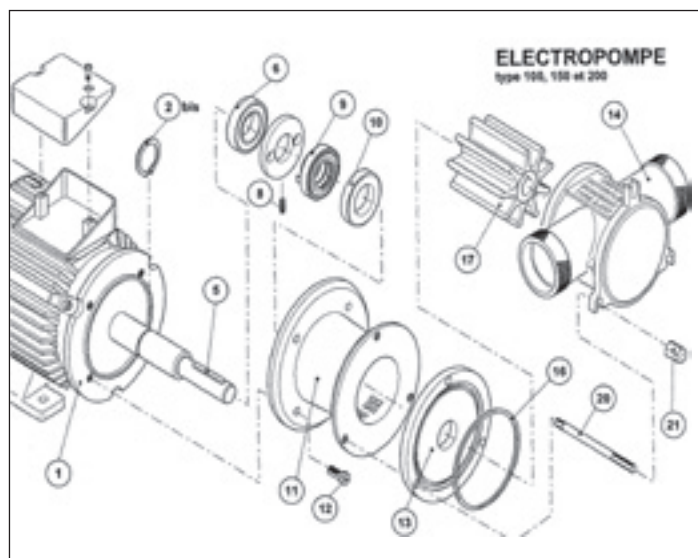
Spare parts

Ref.	Description	Code
1	Motor to be defined according to models	Please contact us
3	Aluminium sleeve coupling	MAN191550
4	Stainless steel axle (supplied with bearing and cotter)	AXE2340
5	Pin	AP4
6	Bearing	CT6302
9	Swivel joint	CY152815
10	Counter-face	CY16295
11	Spacer ring	FP419
13	Intermediate flange	FLR40AR
14	Pump housing	FNR40MACON
16	O-ring gasket	CT6525
17	Neoprene impeller	MB4015
20	Stainless steel tension rod	TIR40

Blister pack kits

Repair kit	Code
Impeller & sealing (ref. 9, 10, 16, 17)	KIT40
Sealing (ref. 9, 10, 16)	KIT40J

ROTORFLEX 100



Spare parts

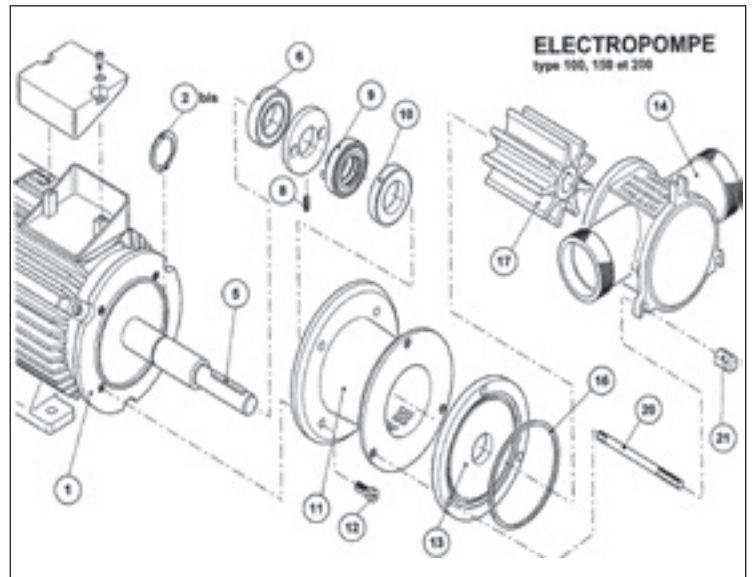
Ref.	Description	Code
1	Motor to be defined according to models	Please contact us
2bis	Circlips	CT25
5	Pin	AP6
6	Bearing	CT6305
9	Swivel joint	CY173215
10	Counter-face	CY18327
11	Spacer ring	FP1019
13	Intermediate flange	FLR100AR
14	Pump housing	FNR100MACON
16	O-ring gasket	CT843
17	Neoprene impeller	MB100
20	Stainless steel tension rod	TIR100

Blister pack kits

Repair kit	Code
Impeller & sealing (ref. 9, 10, 16, 17)	KIT100
Sealing (ref. 9, 10, 16)	KIT100J

ROTORFLEX 150 - 200

Spare parts			
Ref.	Description	Code	
		Type 150	Type 200
1	Motor to be defined	Please contact us	Please contact us
2bis	Circlips	CT30	CT30
5	Cotter	AP6650	AP8860
6	Bearing	CT6306	CT6306
7	Drive ring	BAGVM.	BAGVM.
9	Swivel joint	CE305415P	CE305415P
10	Counter-face	CY305710	CY305710
11	Spacer ring	FP2001	FP2001
13	Intermediate flange	FLR150AR	FLR200AR
14	Pump housing	FNR150MACON	FNR200MACON
16	O-ring gasket	CT953	CT1153
17	Neoprene impeller	MB15020	MB200
20	Stainless steel tension rod	TIR150/200	TIR150/200

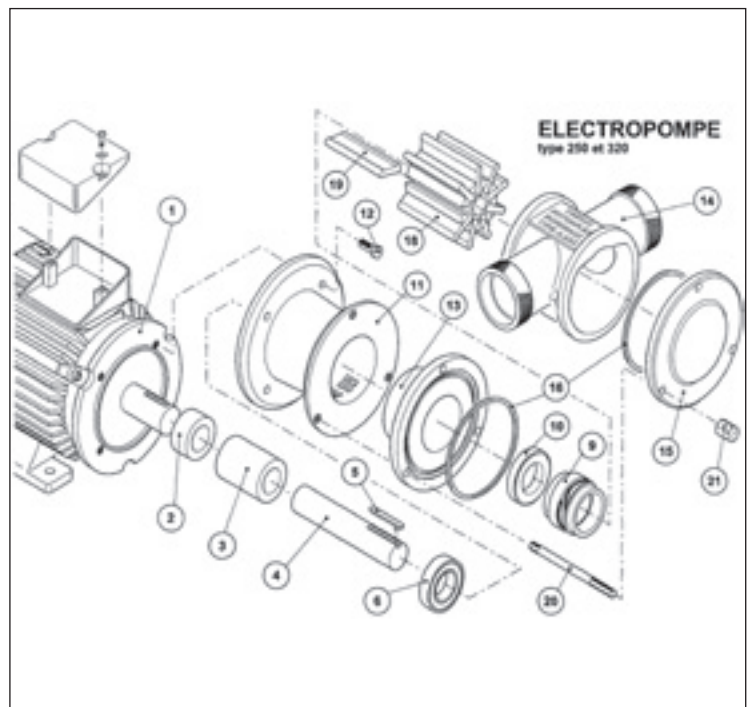


Blister pack kits

Repair kit	Code	Code
Impeller & sealing (ref. 9, 10, 16, 17)	KIT150	KIT200
Sealing (ref. 9, 10, 16)	KIT150J	KIT200J

ROTORFLEX 250 - 320

Spare parts			
Ref.	Description	Code	
		Type 250	Type 320
1	Motor to be defined	Please contact us	Please contact us
2	Brass ring	BA283215	BA283215
3	Aluminium sleeve coupling	MAN283080	MAN283080
4	Stainless steel axle (supplied with bearing and cotter)	AXE3250	AXE3320
5	Cotter	AP8870	AP8880
6	Bearing	CT6308	CT6308
9	Swivel joint	CY304426	CY304426
10	Counter-face	CE30457	CE30457
11	Spacer ring	FP2508	FP2508
13	Intermediate flange	FLR250AR	FLR250AR
14	Pump housing	FNR250MACON	FNR320MACON
15	Front flange	FLR250AV	FLR250AV
16	O-ring gasket	CT1253	CT1253
18	Support for blades	MB3250N	MB320N
19	Blade set (9)	MB3250	MB250/320
20	Stainless steel tension rod	TIRANTINOXR1250	TIR320



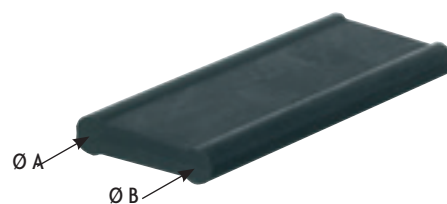
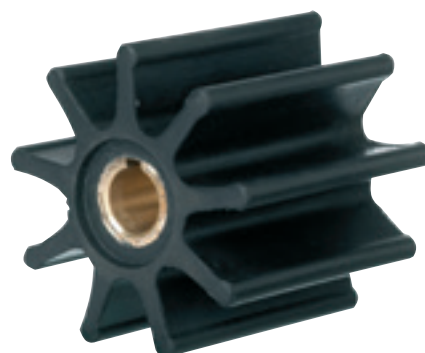
Blister pack kits

Repair kit	Code	Code
Impeller & sealing (ref. 9, 10, 16, 19)	KIT250	KIT320
Sealing (ref. 9, 10, 16)	KIT250J	KIT320J

Pièces diverses Oenoflex®, Rotorflex®

Rotorflex Impeller

Code	Ø axle	Cotter	External Ø	Length	No. of blades
MB05	12	4	40	14	12
MB10	12	4	45	20	10
MB15	15	4	55	20	9
MB2015	15	4	55	30	10
MB2017	17	6	55	30	10
MB30	15	4	65	35	9
MB4015	15	4	65	55	9
MB4017	17	6	65	55	9
MB6015	15	4	71	60	9
MB6017	17	6	71	60	9
MB100	17	6	80	70	9
MB13017	17	6	85	80	10
MB13020	20	6	85	80	10
MB15020	20	6	95	90	9
MB15030	30	méplat	95	90	9
MB200	25	8	110	92	9



Oenoflex impeller

Code	Ø axle	Cotter	External Ø	Length	No. of blades
MBL100	30	Ø 8 transversal	120	80	10
MBL200	30	Ø 8 transversal	160	109	10
MBL200C for LCE15/260	30	Ø 8 transversal	160	109	10
MBL300	40	Ø 12 transversal	190	120	12
MBL600	40	Ø 12 transversal	230	130	10

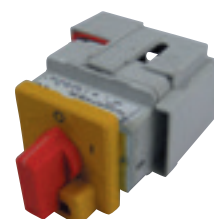
Vane set

Code	Quantity/set	Ø A	Ø B	Length	Width
MB1509	Replaced by MB15020				
MB3250	9	10	9	100	40
MB250/320	9	10	9	114	40



Support for blades

Code	Ø axle	External Ø	Length	Material
MB250 N	20	63	114	Laiton
MB3250 N	30	72	100	POM
MB320 N	30	72	114	POM



Electrical devices

Code	Description
SEW10530200	20A direction reversal switch for countersinking
SEPI0530200	20A coupler/direction reversal switch for countersinking
FM014	Thermal circuit breaker for countersinking (specify amperage)
AE1V	Complete 1 speed control box (specify amperage)
AE2V	Complete 2 speed control box (specify amperage)




Oil

HYDRO	Oil for mechanical regulator, 1 liter can
HYDROR	Oil for motor reducer, 1 liter can

Console

NR/CONSOLE/SKPAR-3H	Programming console for Nord variator
---------------------	---------------------------------------





Pressure switch


The pump is automatically controlled by the nozzle for barrel filling. This option is only available on pumps with electronic variators.

- Pressure switch 40
- Pressure switch 50
- Pressure switch 70

Quick valve kit

Closing the valve in one second with actuator and coupling

- Outlet 50 mm
- Outlet 65 and 70 mm
- Outlet 80 mm
- Outlet 100 mm



NEW

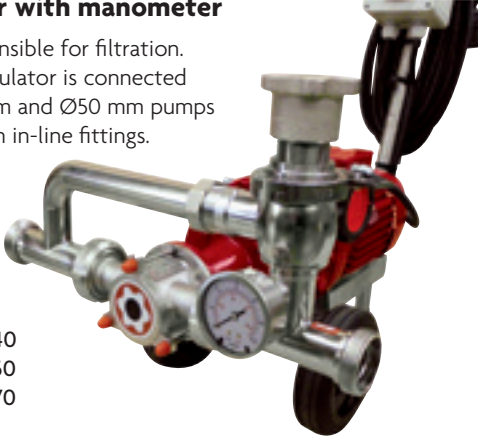
Touchscreen display

Only for LOB and Doublexc pumps




100% stainless steel pressure regulator with manometer

Indispensable for filtration.
The regulator is connected to Ø40 mm and Ø50 mm pumps with in-line fittings.



- Regulator 40
- Regulator 50
- Regulator 70

Vibrating reed option

Security against dry running for pumps with electronic variators.

- DN40
- DN50
- DN70

Sensor for oxygen measurement



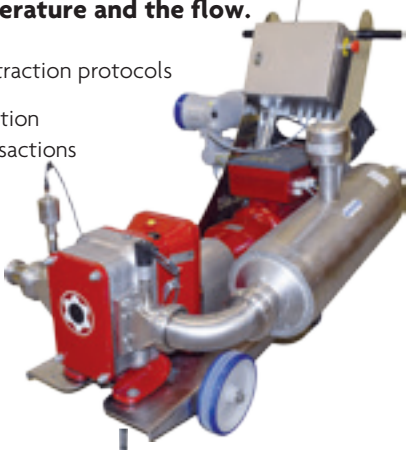


LOB®M

Mesures and records the density, the temperature and the flow.

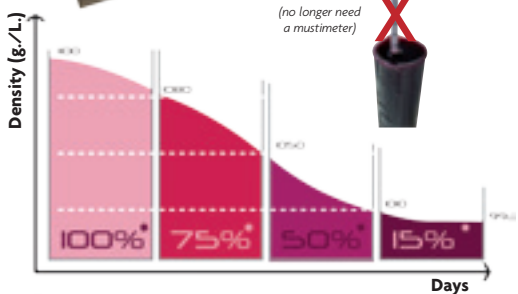
Target:

- Better control of your extraction protocols according to the progress of the alcoholic fermentation
- Secure your business transactions

Applications:
Must, wine, oil, alcohols

(no longer need a mustimeter) ~~X~~



Density (g./L.) vs Days


100% 75% 50% 15%

• No de la carte à payer par téléphone

Remote control

For electronically controlled pump. Forward and reverse at variable speed, Reach 150 m, IP67, Operating temperature: -20° C to + 50° C. 18 frequencies Available on new pumps only.

- Compelec 33
- Compelec 37
- Compelec 37 LOB_ATEX



NEW

Radio Blue 5,5 kilowatts

On/off/reversal Power 4 kW, 400 V, IP66, 16A outlet, Electropolished support, 10 meters cable

Compelec 22



Wired remote controle


20 meters cable



Wall-mounted float box

5,5 kW with power supply cable 3 meters and 5-meters float cable with counterweights 24V control. 16A outlet. manual/automatic mode.

BFM4.10M



PLEASE NOTE: Some options cannot be combined on the same pump.

New products: pumps, equipments, automation

DOSA PRED

Dosing peristaltic pump for the incorporation of your oenological inputs.

Peristaltic pump with flexible rubber hose for working pressures up to 8 bar. The flow varies from 0 to 5 Gal US/mn (140 to 1200hl/h).
 Batch mode: by introducing a predetermined quantity, the pump starts and stops once the transferred quantity is reached.
 Equipped with a rotary encoder. Continuous mode: the instantaneous flow is detected and adjustable according to your needs.

Mode «continuous».



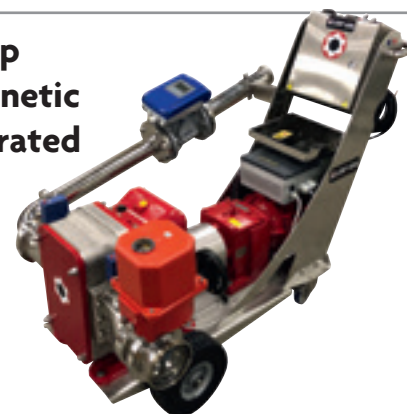
PUMPING OVER CENTRIFUGAL PUMP

Centrifugal pump with vortex effect
From 5 to 600hl/h
 (depending on model)



Lobular pump with electromagnetic flowmeter integrated

Flowmeter
 ø 50 mm, ø 65 mm,
 ø 70 mm



Feeding hooper for lobular pumps

LOB200.TREMIE - LOB300.TREMIE
LOB600.TREMIE - LOB1000.TREMIE

With solids detection sensor



Mechanical gun for automatic filling

Works by gravity or with any pump equipped with a pressure switch or bypass.

No electric device, precise and easy to use

No overflows

Very little foaming effect

Working confort for the user



Lobinox®

Inox pumps with 3 lobes

Flow: from 50 to 400hl depending on the model



Hélico-centrifugal pumps 316L for pumping over to be fixed on a tank

HCZ70: flow 70 Gal US/mn (100hl/h). Motor 3 Kw. 1400 Rpm
HCZ100: flow 43 Gal US/mn (100hl/h). Motor 1,1 Kw. 1400 Rpm
HCZ200: flow 87 Gal US/mn (200hl/h). Motor 3 Kw. 1400 Rpm
HCZ300: flow 132 Gal US/mn (300hl/h). Motor 4 Kw. 1400 Rpm



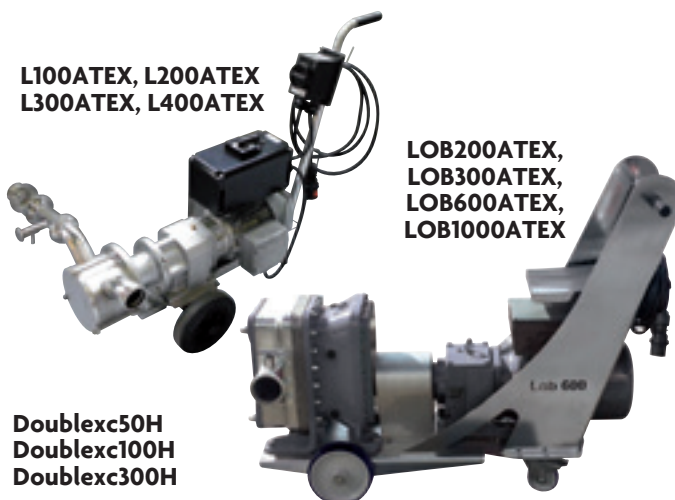
ATEX pumps: Cenoflex® and LOB®

Designed and manufactured according to the ATEX standard:

Category: 3G - Use in zone n°2

L100ATEX, L200ATEX
L300ATEX, L400ATEX

LOB200ATEX,
LOB300ATEX,
LOB600ATEX,
LOB1000ATEX



Doublexc50H
Doublexc100H
Doublexc300H

BNIC certificate: on demand for lobes (LOB® range) and membranes (DOUBLEXC® range)

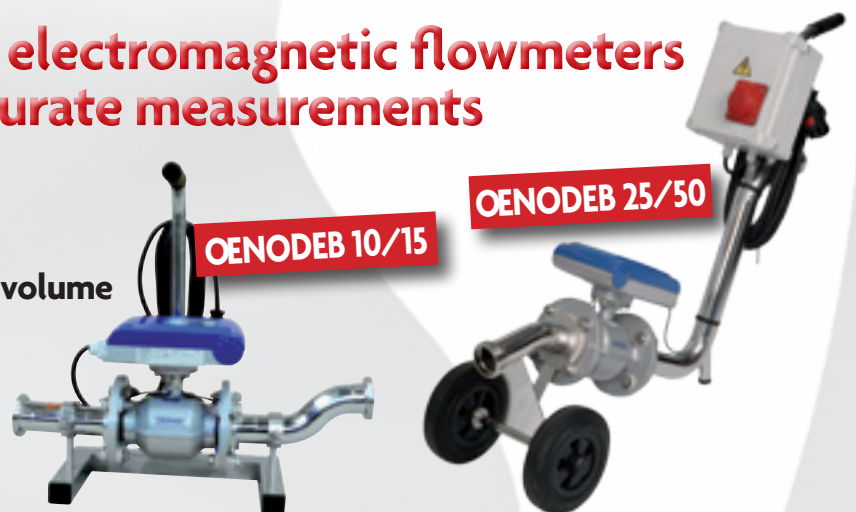
A complete range for a high quality counting



A complete range of electromagnetic flowmeters for your accurate measurements

- Instantaneous flow display
- Totalizer display and reset
- Stopping of the pump at the scheduled volume

The monitoring and control solution for:
your transfers,
your blends, your stock.



References	Oenodeb 10	Oenodeb 15	Oenodeb 25	Oenodeb 50	Oenodeb 80	Oenodeb 110
Connection diameter (mm)	50	70 Macon / 65 DIN	50	70 Macon / 65 DIN	80	100
Flow Range	13 to 110 Gal US/mn 30 / 300 hl/h	22 to 307 Gal US/mn 50 / 700 hl/h	13 to 110 Gal US/mn 30 / 300 hl/h	22 to 307 Gal US/mn 50 / 700 hl/h	88 to 396 Gal US/mn 200 / 900 hl/h	110 to 660 Gal US/mn 250 / 1500 hl/h
Product temperature (°C)	-5 to 70					
Conductivity (µS/cm)	≥ 5					
Accuracy of flow measure (%)	+/- 0.2		+/- 0.3		+/- 0.3	
Repeatability of flow measure (%)	+/- 0.1					
Volts	220 V standard (380 V available on demand)			380 V (standard)		380 V
Stopping of the pump at the scheduled volume	No		Yes		Yes	
Dimensions (mm)	650 x 320 x 580	750 x 320 x 580	1050 x 350 x 750	1300 x 500 x 800	200 x 200 x 300	NC



Main French manufacturer of pumps for wine making, alcohol and food liquids, CAZAUX, created in 1954, strongly developed these last years.

CAZAUX increased its production capacity and moved in 2013 on a new production site in Montussan, near Bordeaux.

In order to offer answers in perfect adequacy with the request of its customers, CAZAUX developed new technologies and widens its pumps range, thanks to its technical and R&D services, to diversify its offer.

Seriousness, reliability and reactivity are the main qualities we developed in our teams. They enable today to offer specific pumping solutions for various applications.

Moreover, CAZAUX trades significantly abroad and is present in a lot of countries in the five continents.



Cazaux
PUMP MANUFACTURER

N°9 - Z.A. de Lalande - 33450 MONTUSSAN - France
Tél. +33 (0)5 57 77 70 70 - Fax +33 (0)5 57 77 70 79
e-mail : adv@rotorflex.com

www.cazaux-pumps.com